


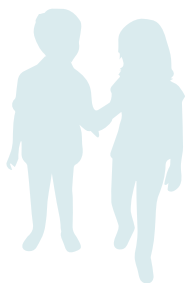
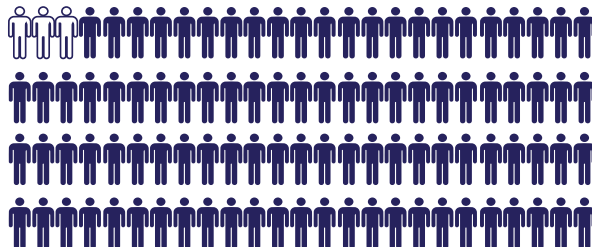
Acute Rheumatic Fever and Rheumatic Heart Disease in the NT

Fast facts for health professionals

 **MORE THAN 4,300** people are living with **ARF** or **RHD** in the NT

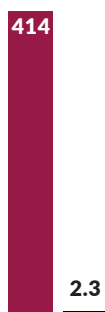
97%

of **ARF & RHD** is among Aboriginal and Torres Strait Islander people



ARF is most common in **YOUNG PEOPLE** aged **5-14 YEARS**

Incidence of **ARF** is **414 per 100,000** among Aboriginal and Torres Strait Islander peoples compared with **2.3 per 100,000** for other Australians



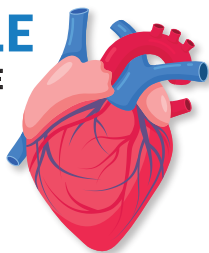
ARF and RHD are PREVENTABLE

by addressing the socioeconomic and cultural determinants of health

44 PEOPLE

had **HEART VALVE SURGERY**.

Almost half were aged between **25-34 YEARS**



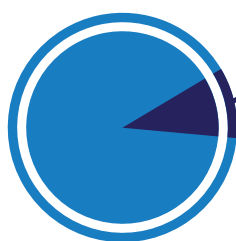
1 in 3 of all **ARF** are **RECURRENCES**

(recurrences are preventable)



28%

of people with **ARF** have heart involvement



11%

of people have **SEVERE** disease at **FIRST RHD** diagnosis

Penicillin injections to prevent recurrent ARF

21%

received all doses

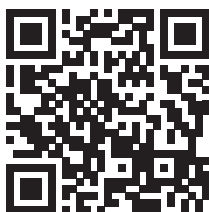
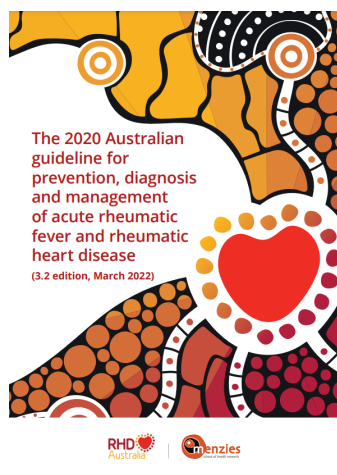
5%

received no doses

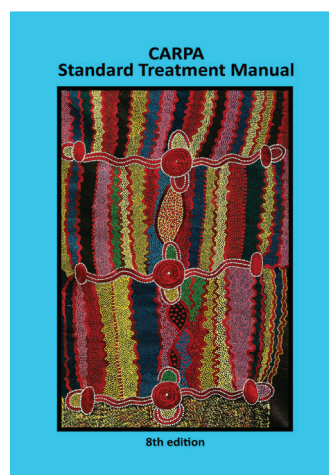
SOURCE: NT RHD Register 2023 Data

The NT RHD Control Program acknowledge that these numbers represent people living with ARF and RHD, and that this disease impacts on individuals, families and communities.

Information for health professionals



- National Australian Guidelines for ARF & RHD
- Accredited ELearning modules for health professionals
- Resource Library



- CARPA Standard Treatment Manual – 8th Ed Pages 342-347



NACCHO
National Aboriginal Community
Controlled Health Organisation



- Resources and education for health professionals & community



**NORTHERN
TERRITORY**
GOVERNMENT

NT HEALTH



- Information for health professionals and the public
- How to access the NT RHD Register

ARF and RHD are both notifiable diseases – to notify contact the RHD Control Program

Location	Email	Phone
Top End	RHDDarwin.THS@nt.gov.au	08 8922 8454
Central Australia	RHDAliceSprings.THS@nt.gov.au	08 8951 6909

For more information, visit

health.nt.gov.au/public-health-notifiable-diseases/acute-rheumatic-fever
rhdaustralia.org.au/

