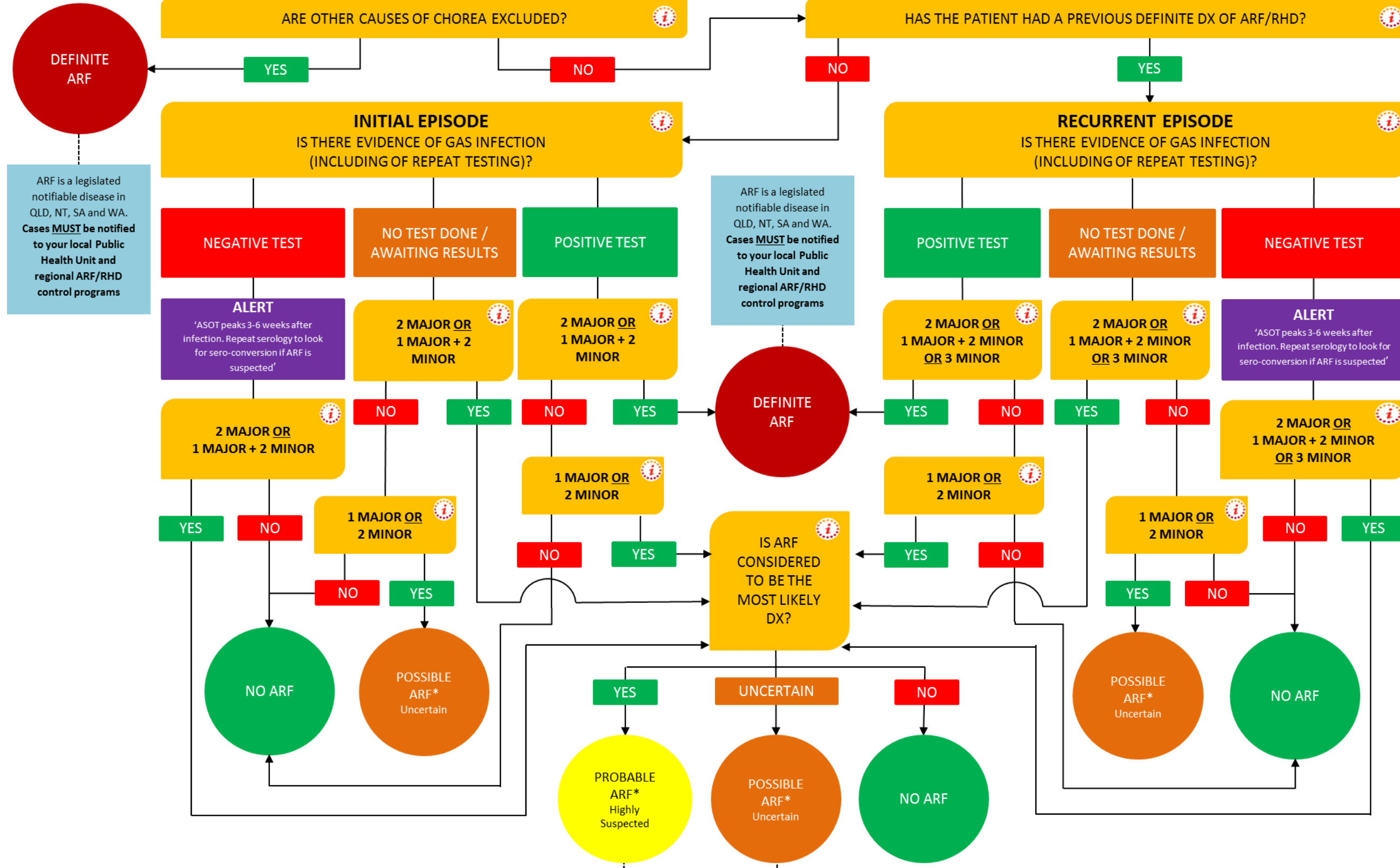


ARF DIAGNOSIS FLOWCHART

(Based on the 2012 Australia RHD Guidelines)



ARF is a legislated notifiable disease in QLD, NT, SA and WA. Cases **MUST** be notified to your local Public Health Unit and regional ARF/RHD control programs

ARF is a legislated notifiable disease in QLD, NT, SA and WA. Cases **MUST** be notified to your local Public Health Unit and regional ARF/RHD control programs

*ARF is a legislated notifiable disease in QLD, NT, SA and WA. **PROBABLE ARF (Highly Suspected)** and **POSSIBLE ARF (Uncertain)** cases must be notified to the regional ARF/RHD control programs